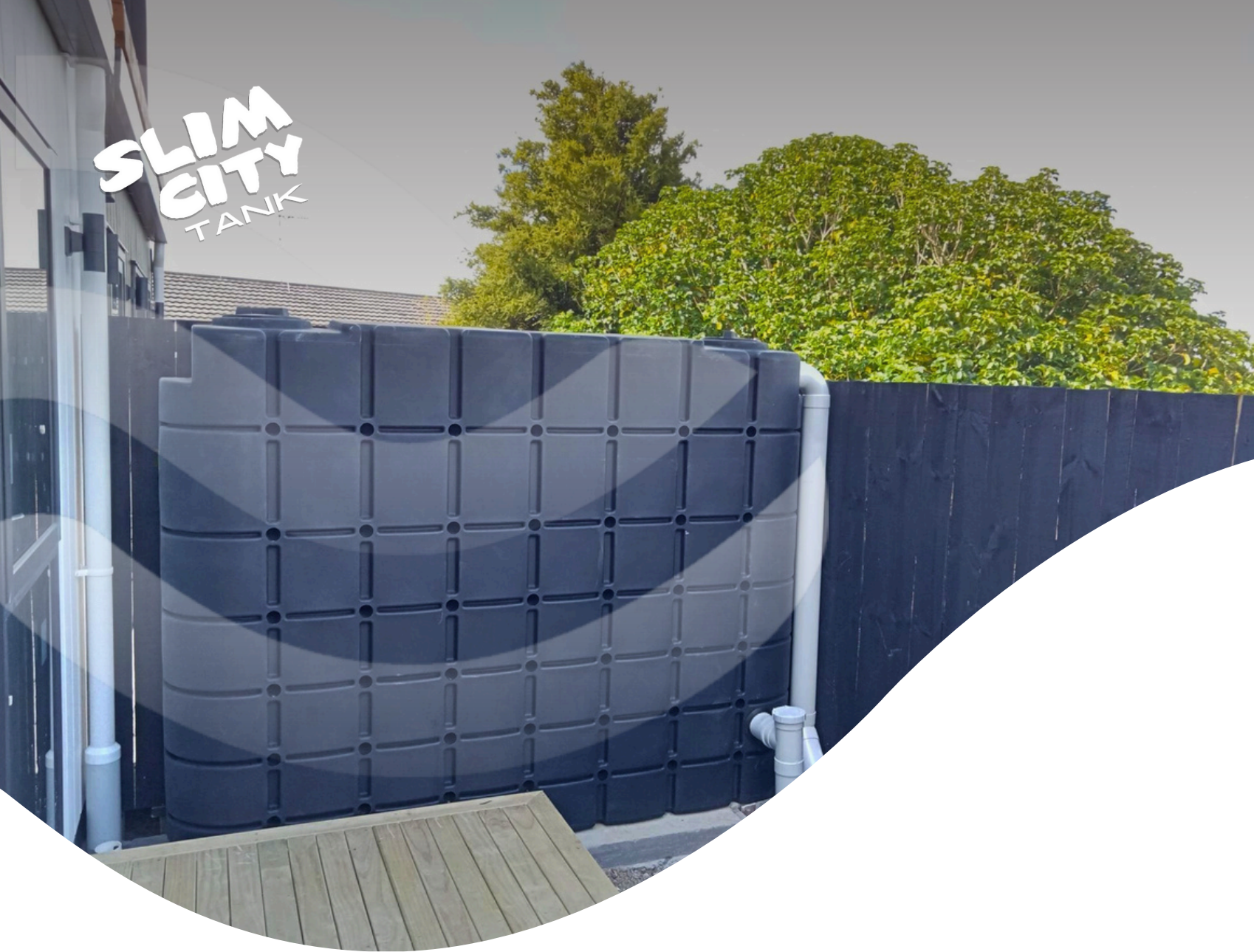
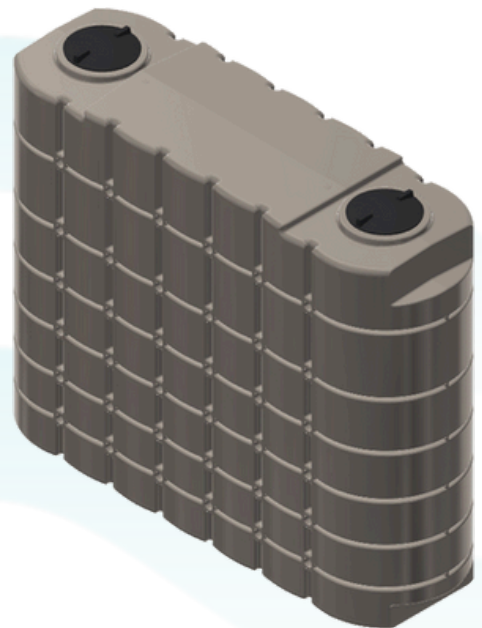


SLIM
CITY
TANK



Save more with less! Slimline tank designed for the modern home.

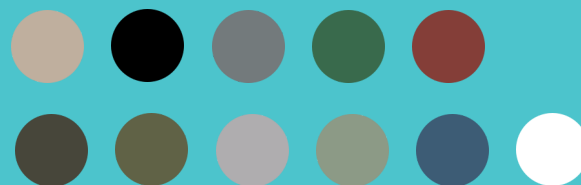
SLIM CITY is the latest in innovative rain harvesting technology. A stylish solution for the modern home.





Colour options for every home.

Birch Grey, Light Grey, Slate Grey & Black are generally in stock. Other colours are available on four week's notice.

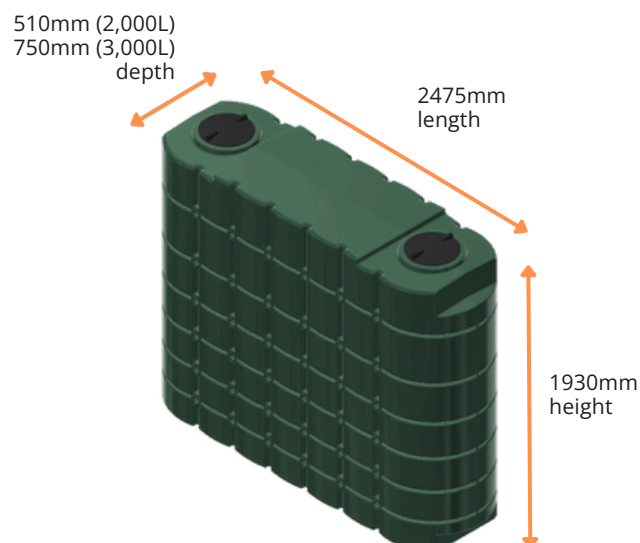


Tank Specifications

SLIM CITY Tank

Capacity:

2,000 litres & 3,000 litres (pictured)



Thanks to the slimline design of our SLIM CITY tank, it makes efficient use of space and is a sightly addition to your home. SLIM CITY comes in both 2,000L and 3,000L.

Benefits

One of the easiest water tanks to install – prepare the base, position in place, attach fixings and connect to an existing downpipe.

A quality product internationally recognised as the most appropriate grade for New Zealand's harsh conditions and specifically created for use with drinking water.

Holds either 2,000 OR 3,000 litres of water. Equivalent to one to two weeks of water supply for the average person. You can have as many tanks as the property can accommodate, and the roof can fill.

Save space with one of the slimmest above-ground tanks with a depth of either 510mm or 750mm.

Moulded in one piece and designed to ensure that stresses are contained within the patented ribbed walls and domed construction.

Manufactured to the Australian and New Zealand water tank standard AS/NZS 4766:2006 and are independently certified by a professional engineer.

Talk to us about a design consultation

Although SLIM CITY tanks are available as a ready-made option, we also provide a design consultation service and expert advice on selecting the most suitable pump solution.

Our team of experts is well-versed in local Council regulations and legislative requirements. We understand the importance of meeting your deadlines and staying within budget, which is why we'll provide you with a layout just a few days after receiving your brief.